

**1609-101**

**REFRIGERATION TEMPERATURE CONTROL**

Provide Positive Control of Refrigeration Applications Where Remote Control is Desired

**FEATURES**

- Hydraulic action element.
- Dustproof steel case with top and bottom knockouts.
- Temperature dial graduated in °F and °C and can be adjusted through cover.
- High electrical ratings allow operation of most equipment without use of relays or motor starters.
- Model 1609-90 — For use in zoning systems where all thermostats control a common compressor & a separate solenoid refrigerant valve in each zone.

**SPECIFICATIONS**

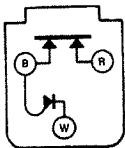
Dimensions..... 5<sup>3</sup>/<sub>8</sub>"H + 2<sup>5</sup>/<sub>16</sub>"W x 2<sup>9</sup>/<sub>16</sub>"D  
 Finish ..... Grey  
 Bulb Mounting..... Clamp included with all models except 1609-90  
 Agency ..... U.L. listed and C.S.A. approved

**PARTS AND ACCESSORIES**

- F89-0027 Refrigeration Well
- F55-0088 Packing Nut

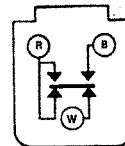
Model Number	Range	Differential	Capillary Length	Bulb Size	Switch Action	Full Electrical Rating	Motor Rating (Full Load)	
							120 VAC	240 VAC
1609-90	-20 to +50°F (-29 to +10°C)	Adj. 3 to 25°F (2 to 14°C)	8 ft.	5 <sup>1</sup> / <sub>4</sub> " x 3 <sup>3</sup> / <sub>8</sub> "	Close on Rise	HH2C see page 416	7.4A	3.7A
1609-101	-30 to +90°F (-34 to +32°C)	Adj. 3.5 to 40°F (2 to 22°C)	5 ft.	5 <sup>1</sup> / <sub>4</sub> " x 3 <sup>3</sup> / <sub>8</sub> "	Close on Rise	FGH see page 416	16.0A	8.0A
1609-103	-30 to +90°F (-34 to +32°C)	Adj. 3.5 to 40°F (2 to 22°C)	10 ft.	5 <sup>1</sup> / <sub>4</sub> " x 3 <sup>3</sup> / <sub>8</sub> "	Close on Rise	FGH see page 416	16.0A	8.0A
1609-104	-30 to +90°F (-34 to +32°C)	Adj. 3.5 to 40°F (2 to 22°C)	20 ft.	5 <sup>1</sup> / <sub>4</sub> " x 3 <sup>3</sup> / <sub>8</sub> "	Close on Rise	FGH see page 416	16.0A	8.0A
1609-105 ①	-30 to +90°F (-34 to +32°C)	Adj. 3.5 to 40°F (2 to 22°C)	5 ft.	5 <sup>1</sup> / <sub>4</sub> " x 3 <sup>3</sup> / <sub>8</sub> "	Close on Rise	FGH see page 416	16.0A	8.0A
1687-9	-30 to +90°F (-34 to +32°C)	Adj. 4.5 to 40°F (2.5 to 22°C)	8 ft.	5 <sup>1</sup> / <sub>4</sub> " x 3 <sup>3</sup> / <sub>8</sub> "	SPDT	SPDT see page 416	7.4A	3.7A

① Knob adjustment



**HH2C Contact Structure**  
HH2C Rated Controls

**Switch Action**  
Double pole, single throw.  
B terminal is common.  
B-R and B-W contacts both close on a rise of temperature.



**SPDT Contact Structure**  
SPDT Rated Controls

**Switch Action**  
R-B Open on Rise  
R-W Close on Rise

COOLING / REFRIGERATION